

eMobility-Gateway



MENNEKES eMobility-Gateway intended for networking of charging infrastructure and a backend system

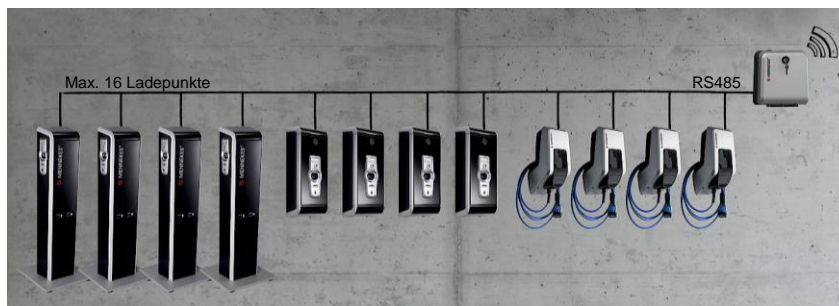
- Connection at up to 16 charging points via RS485-Bus
- Communication with the backend via OCPP (Open Charge Point Protocol)
- Enclosure
Top PBT/PC grey, coated in silver
Base PBT/PC black

PRODUCTFEATURES

- eMobility-Gateway intended for networking of MENNEKES charging systems with a backend system
- communication to the backend via mobile network or LAN
- 2 integrated LTE-antenna for optimal communication
- protocol to the backend: OCPP (v. 1.5)

- connection up to 16 charging points (SCU) via RS485-Bus
- connection terminals for bus participants (SCUs)

- for a combined connection of different MENNEKES charging systems (e.g. ground- or wall-mounted charging stations, AMTRON®).



- integrated Load-Management
 - Distribution of the maximum available charging current
 - Ensure adequate supply of connected vehicles (minimum charging current)
 - Avoid expensive power peaks

- robust and lockable enclosure for stationary mounting in indoor and outdoor areas

- mounting material and cable entries enclosed

TECHNICAL DATA

Part number	310551		310561	
type	eMobility-Gateway			
locking enclosure	varying locking		simultaneous locking	
Rated voltage U_n	230 V AC $\pm 10\%$			
Rated frequency f_n	50 Hz			
Rated current I_{nA}	0,5 A			
Maximum backup fuse	6 A			
Earthing system	TN / TT			
Degree of protection	IP 54			
Protection class	II with functional earthing			
Pollution degree	3			
dimensions	250 mm x 250 mm x 100 mm (H x W x D)			
weight	1,7 kg			
Condition of installation	Stationary equipment			
Mounting method	Wall mounting			
Maximum cable cross-sections at the terminals	rigid	Max. 2,5 mm ²		
	flexible	Max. 2,5 mm ²		
Terminal RS 485-Bus (2x2 connection points and 2 shield connections)	rigid	0,08 - 6 mm ²		
	flexible	0,08 - 4 mm ²		

ENVIRONMENTAL CONDITIONS

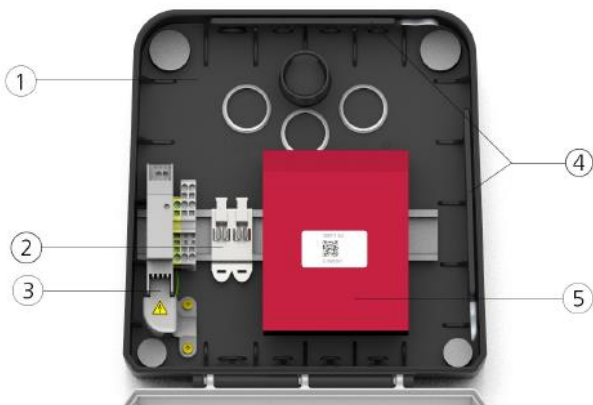
Ambient air temperature	-25 ... +40 °C
Average temperature within 24 hours	< 35 °C
Storage temperature	-25 ... +40 °C
Altitude	max. 2.000 m above sea level
Relative humidity	max. 95 % (non-condensing)

ASSEMBLY

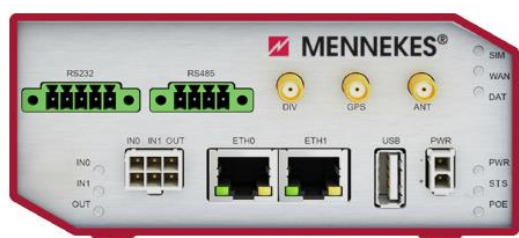
Technical changes reserved

Date: 04-2017 – V.1.0

Date:



- | | | | |
|---|--------------------------|---|----------|
| 1 | Bottom part of enclosure | 4 | Antennas |
| 2 | Bus terminals | 5 | ACU V4 |
| 3 | Mains connection | | |



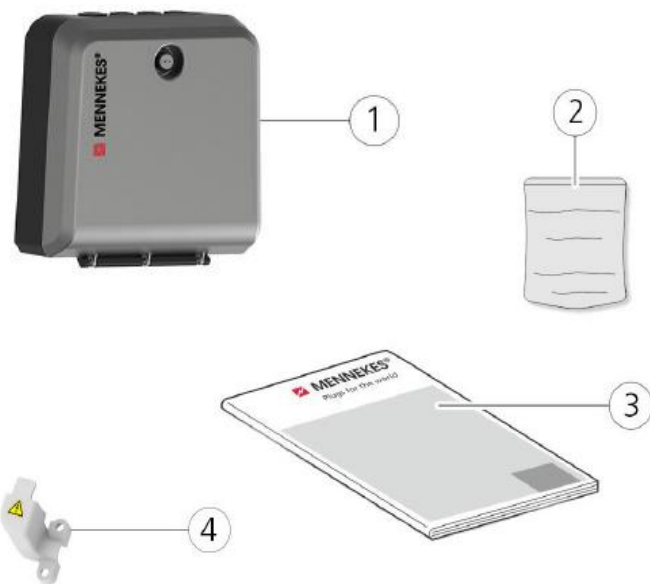
Connections

- RS232: Bus
- RS485: Bus
- ETH0: LAN
- ETH1: LAN

Displays

- SIM: GPRS status
- WAN: Internet connection
- DAT: Data transmission over antenna
- PWR: Power (ready for use)
- STS: Status of devices

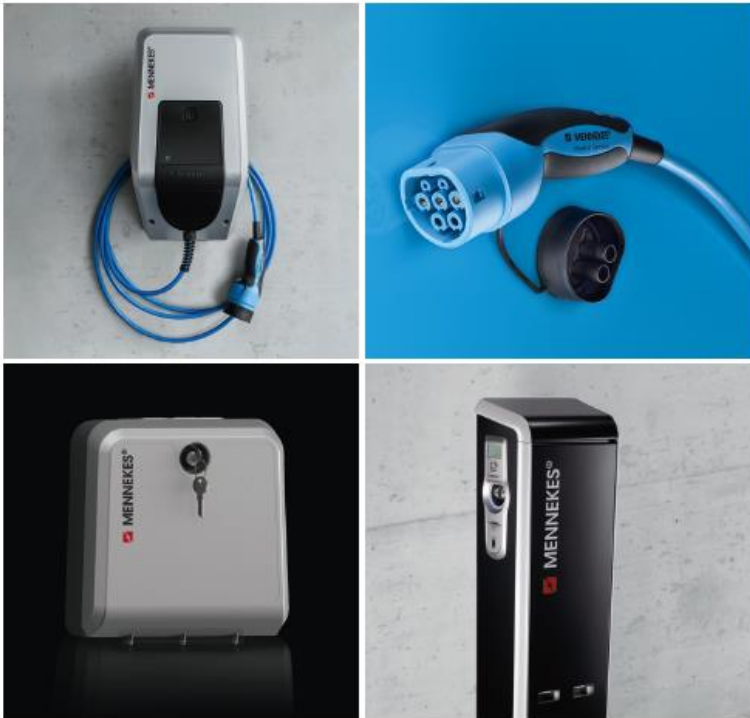
DELIVERY CONTENTS



- 1 E-Mobility Gateway
- 2 Bag with accessory
 - 2 keys
 - 3x membrane cable entry CLIXX 20
 - 1x membrane cable entry CLIXX 25
 - 3x Quixx membrane sleeve EMT 32 IP66
 - 2x sealing plug ø15.6
 - 2x sealing plug ø 24.6
 - 4x Fischer universal dowel UX 8 x 50 R
 - 4x countersunk screw - SPS A2 5.0x50 T25
- 3 Installation and operating manual
- 4 Cover for power supply (inside the device)



CHARGE UP YOUR DAY!



Thousands of MENNEKES charging points are in daily use in Europe, delighting users in their diverse life situations.

As an innovative leader we offer a broad portfolio of charging solutions for the private and public applications



Charge up your day with MENNEKES, the specialist for
Intelligent eMobility charging solutions.

MENNEKES

Elektrotechnik GmbH & Co. KG
Industrial plugs and sockets

Aloys-Mennekes-Str. 1
57399 Kirchhundem
GERMANY

Tel.: +49(0)2723/41-1
Fax: +49(0)2723/41-2 14
E-Mail: info@MENNEKES.de

WWW.MENNEKES.DE
WWW.CHARGEUPYOURDAY.DE